



June 2019

The Spark

Riviera Presbyterian Church embracing all God's children

A Journey Through Exodus

A Story of God's love for God's people

Summer Sermon Series

Starts June 2 @ 11:00 am

www.rivierachurch.org

Mission Statement

Riviera Presbyterian Church is a spiritual community that accepts and embraces all God's children.

Missy's Message

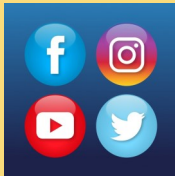
Riviera Presbyterian Church
5275 Sunset Drive
Miami, FL 33143
(305) 666-8586

11:00am Sunday Worship Service

Office Hours M - F 9:00-5:00

www.rivierachurch.org

Connect with us on social media
@RivieraChurch



Rev. Martha Shiverick
Pastor
marthashiverick@gmail.com

Walter Busse
Director of Music

Barbara Prieto
Certified Church Administrator
rivierachurch@bellsouth.net

Kathy Stults
Clerk of Session
Session Members
Kyle Dettloff
Vivian German
Christian Mazzola
Barbara Overton
Bryan Page
Rey Prieto
Kathy Stults
Cris Sweeny

Riviera's Mission Statement

Riviera Presbyterian Church is a spiritual community that accepts and embraces all God's children.

Therefore;

- We engage with each other in joyful worship and thoughtful education.
- We dedicate our resources and talents to God's work.
- And we open our hearts in active mission to others.

Donate

WWW.RIVIERACHURCH.ORG



June 2019

Dear Riviera Family,

I have been looking forward to this summer for months. In March you voted on the theme for this summer and the overwhelming favorite was for us to journey through the Book of Exodus.

Two summers ago we worked our way through the book of Genesis and we will pick up from there and bring to life and personal meaning the story of Moses and the journey of the Hebrews from Egypt through the Sinai Peninsula. Exodus is filled with great stories, drama, and even suspense. But the message of God's love and faithfulness to God's people is at the core of every page and that is good news for us in this day and age. God is with us and will not abandon God's people.

Summer also provides a time to be playful in worship and to change the set up and ambiance of the sanctuary. The liturgical artists in our congregation have come up with great ideas again this year. I think you will like all the exciting visual and physical changes to our worship space for these summer months.

To enhance our Exodus experience, we will not have Flat Jesus paper friends with which to travel and take on our daily experiences, but will get to spend our summer with Flat Moses. Make sure to send the church lots of photos of your excursions with Moses in the summer months.

Each summer we try and find a movie which goes with the summer theme for an evening in July. And we have found a great one for this summer. Please save Saturday July 13th at 6pm for the musical *Prince of Egypt*.

Please invite your friends and neighbors to worship with us at Riviera and share in our fellowship this summer. Statistics show that 85% of people who join churches do so because someone invited them to attend.

In Christ and in love,
Missy
The Rev. Martha M. Shiverick

Worship & Music

Come worship every Sunday in June at 11:00 am:

**You are invited to take the journey through the
Book of Exodus this summer**

June 2 - Exodus 1-2 - Israel's Plight and God's Response

June 9 - Exodus 3-4 - The Call and Commissioning of Moses

June 16 - Exodus 5-11 - The Lord and the gods of Egypt (including the Pharaoh)

*June 23 - Exodus 12-13 - The 10th Plague and the Passover – The Rev. Diane Shoaf preaching

*June 30 - Exodus 14-15 - Passage through the Sea - The Rev. Rosemary N. Welton preaching



Ukulele rehearsals are Sunday, June 9 and June 23 at 12:30pm in the sanctuary. If you are interested in joining please speak to our Director of Music, Walter Busse. We have ukuleles available for you.

JOIN THE CHOIR

If you're interested in getting involved please come on Thursdays at 7:30pm in the sanctuary and give it a try.

Make
a *Joyful* noise unto the Lord
Psalms 98:4

Christian Education



You are invited to **Theology Over Morning Java** Sundays at 9:30 am in the church library. Elder Chuck Hannemann leads this class for all adult ages and all spiritual stages.



Christian Education for children

The Deep Blue Mission:

Reaching, empowering, and equipping children, and those who care for them, with grace-based resources that help them on the journey.

Deep Blue Kids will...

Be with God

Love God and neighbor

Understand themselves as children of God

Explore faith and the Bible

Deep Blue offers meaningful and engaging curriculum, encouraging children to “dive deeper” into the Bible and explore their faith in fun and age-appropriate ways. Sunday school will be the 2nd and 4th Sunday of the month. The 1st and 3rd Sunday of the month children are invited to attend worship.



Mission

RIVIERA'S FOOD PANTRY **CURRENT NEEDS**

granola or protein bars
Shelf milk

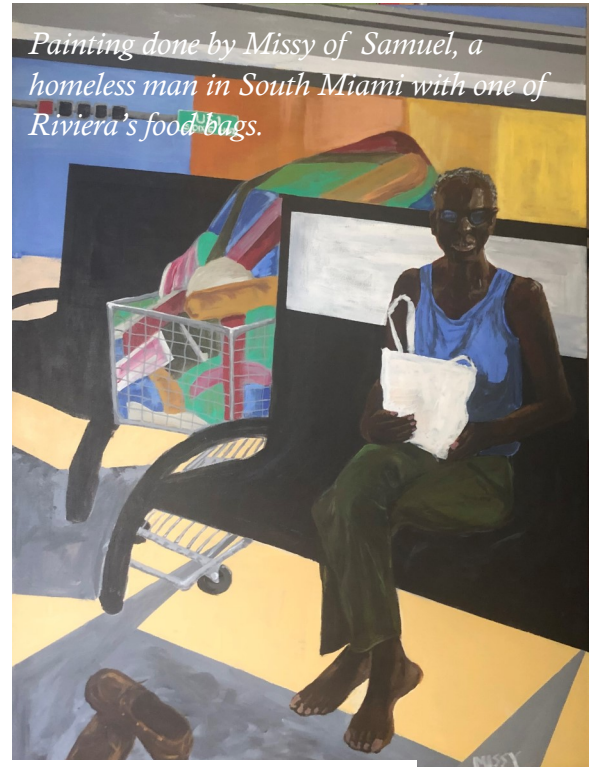
**So far this year with your donations
we have given out**

34 family size grocery bags

36 individual bags

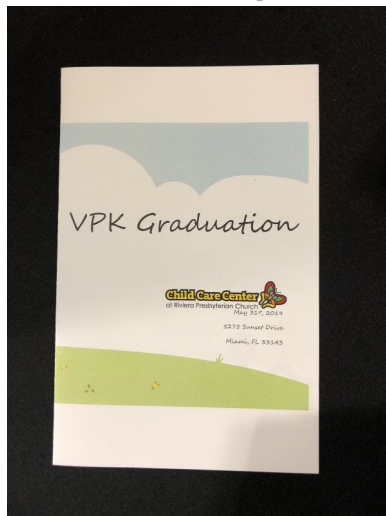
10 grocery store gift cards to families at
Frances Tucker Elementary

If you would like to make a donation to the
food pantry please go to
www.rivierachurch.org - memo Food Pantry



Child Care Center

at Riviera Presbyterian Church



Riviera Presbyterian Church is thrilled to celebrate the graduation of the 5year old students from our Childcare Center. Riviera believes that when you educate a child, you share the world. Our Child Care Center is a place where the child will be loved and valued, carefully nurtured and guided, and where learning experiences will be ones of joy and success

More Mission



Parkway Presbyterian Church

"The Friendly Church With A Place For You"

505 South Tyndall Parkway (850)785-7081
Panama City, Florida 32404 Fax (850)763-5101
www.parkwaypcf.org

The Rev. Dr. Richard M. Connor, Sr., Pastor

May 10, 2019

The Rev. Martha Shiverick
Riviera Presbyterian Church
5275 Sunset Drive
Miami, FL 33143

Dear Pastor Shiverick and Sisters and Brothers of Riviera Presbyterian Church:

Grace and peace be unto you from God our Father and the Lord Jesus Christ.

On behalf of our Church Family at Parkway, I wanted to thank you for your kind and generous donation in the amount of \$500.00 for the Renovation Fund as we try to renovate our facilities in the aftermath of Hurricane Michael. This will certainly go a long way in helping us to rebuild so we can once again carry out the ministry to which we believe God has called us in Christ Jesus our Lord.

Thanks to donors like yourself and all of our volunteers, we are making wonderful strides toward completion of our renovations.

Blessings to you on your wonderful ministry in the Miami area! God has indeed blessed us through you!

Again, thank you so much for your support of our ministry at Parkway!

In the hope and peace of our Risen Lord, I am,

Pastor Ric

**Your donation
dollars at work!**



Presbyterian Mission
Hunger Program

Riviera Presbyterian Church
5275 Sunset Dr.
Miami, Florida 33143

March 2019

Dear members of Riviera Presbyterian Church,

"We dare to act because we dare to hope," declares the PC(USA)'s Common Affirmation on Hunger, passed in 1987, re-iterating Presbyterian statements on hunger from as early as 1969.

Now in the 50th year of Presbyterian dedication to hunger as a major mission emphasis of the church, the Presbyterian Hunger Program continues to act and continues to hope.

We know that God is working in the world. We are constantly inspired to see Christ's compassion and the Spirit blowing throughout the creation, as good people work together to alleviate hunger and eliminate its causes. You are a part of this story.

With gifts like yours, we are alleviating hunger and addressing the underlying reasons why people are hungry. We do this work through supporting farming, agricultural training, community organizing, and innovative food storage and distribution systems. We also are building up food sovereignty, protecting local community voices and rights, and working to heal God's creation.

Enclosed are some examples of the efforts around the world making a difference in people's lives. We are privileged to learn from and with these partners all around the world. Presbyterian generosity helps to make these projects possible.

Thank you for your partnership and your gift to the Presbyterian Hunger Program. Because of you, we can continue to act and continue to hope!

With gratitude,

Rev. Rebecca Barnes
Coordinator, Presbyterian Hunger Program



Thank you for your gift!



Let us celebrate the fulfillment of God's promise to use through the coming of the Holy Spirit by guiding our young people toward a brighter, faith-filled future by supporting the Pentecost Offering. Give at www.rivierachurch.org



*A foundation
of faith established
during childhood
through young
adulthood helps
ensure lifelong
faith and service.*





Tuesday, June 18 Riviera will be hosting a Town Hall Meeting with House Representatives who will be updating the community on what took place in Tallahassee this past session. The event is scheduled from 7 – 8:30 pm.

Besides being an informative event for all where you will get to ask questions and find out what happened in Tallahassee, this is also an opportunity to expose the local community to Riviera's hospitality.

Please let us know below if you can participate in any of the following: Arrival time is 6pm

_____ Provide cookies – homemade or store bought

_____ Serve as greeters - hosts

_____ Direct people where to park – need 3 persons - We will have a vest for you

_____ I want to serve where needed

Please call or email the church if you are able to help.

RPC is a spiritual community that accepts and embraces all God's children

THEOLOGY **uncorked**

2nd Sunday of the Month
5-7pm
Titanic Restaurant & Brewery
5813 Ponce De Leon Blvd,
Coral Gables



THEOLOGY UNCORKED

Theology Uncorked will meet on Sunday, June 9th at 5:00 pm at Titanic Restaurant and Brewery, where we wrestle with issues of social concern.

Titanic is located at 5813 Ponce de Leon Blvd, Coral Gables, FL 33146. All are invited!

Food and beverages for purchase.

Holy Grounds



Holy Grounds - in need of help in June & July

Holy Grounds is the time after worship where we gather for refreshments and fellowship time after worship. Currently there are several dates open. Please see the sign up sheet in the Welcome Area/Narthex or contact the church office. You can contribute \$25 and we will purchase the treats or you can bring them on your chosen date. Monetary contributions will be needed at least one week ahead of chosen

Riviera Presbyterian Church is an Earth Care Congregation

Earth Care Tips: Making Sense of Sustainable Coffee Labels

They're those little rectangular icons lined up on your favorite gourmet coffee bags—a tree, a flower, a frog, a harvester, each trying to tell you something about how the coffee was grown. But what does each one mean, and how do they differ?



<https://www.rainforest-alliance.org/articles/rainforest-alliance-certified-coffee>



<https://ationalzoo.si.edu/migratory-birds>



<https://www.usda.gov/topics/organic>



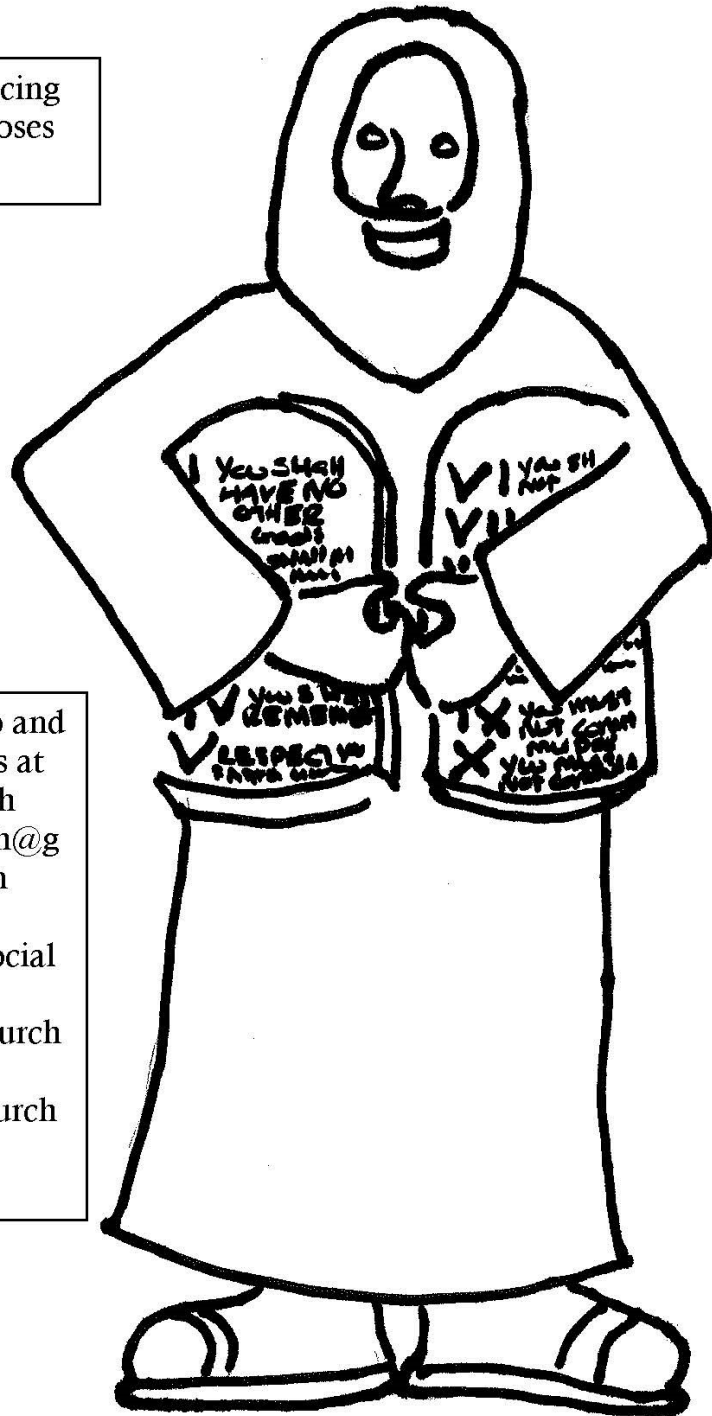
<https://www.fairtrade-certified.org>

EXODUS

A STORY OF GOD'S LOVE FOR GOD'S PEOPLE

God is with
you on all your
journeys,
whether they
are in your
neighborhood
or far from
home!

Color Moses and cut him out. Take him on all your 'exoduses' this summer.



Fellowship - Upcoming Events

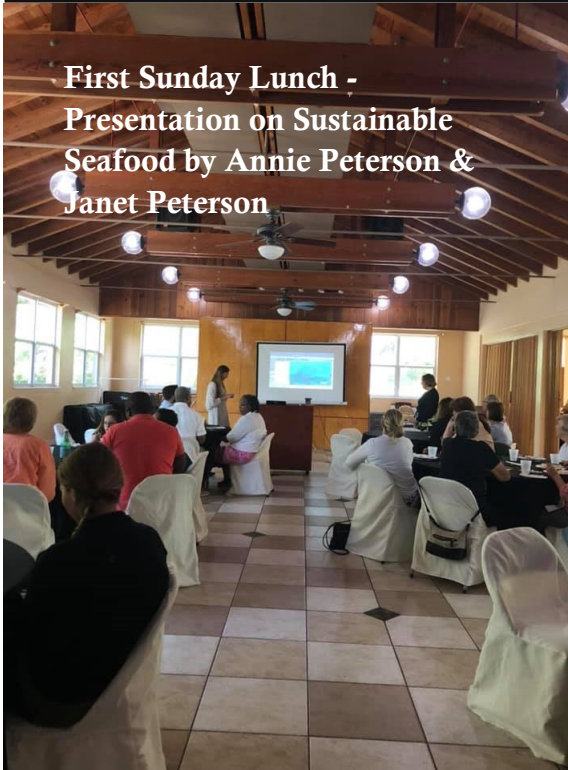


An Egyptian prince learns of his identity as a Hebrew and his destiny to become the chosen deliverer of his people. Oscar Winner for Best Song!

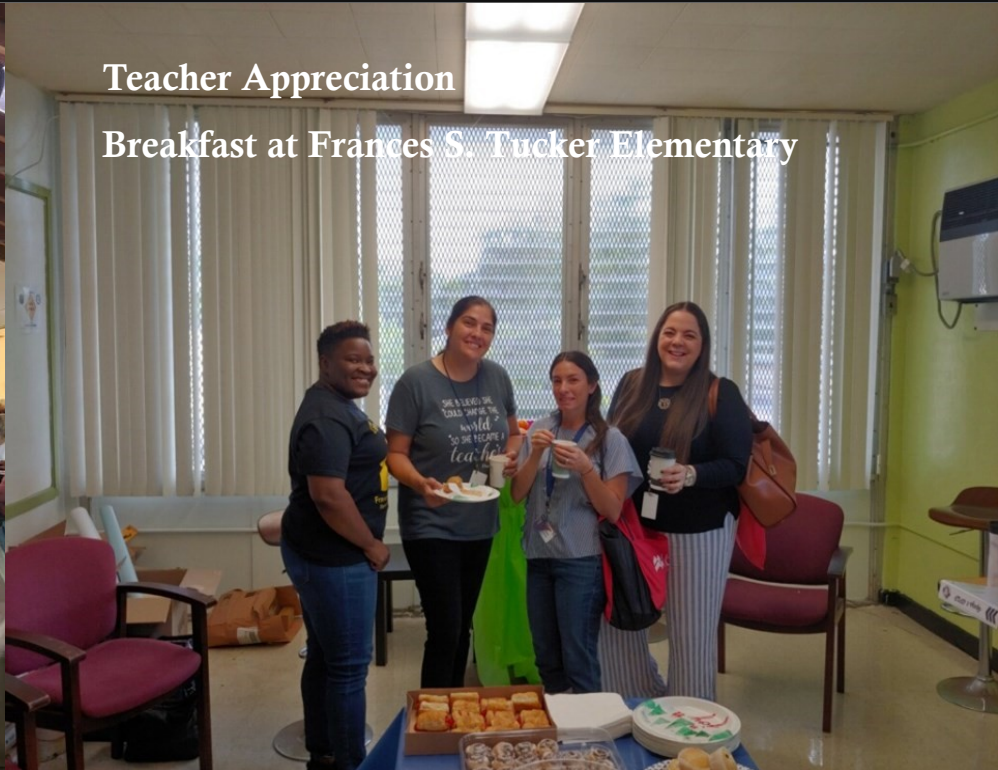
All ages are invited to attend the showing of the Prince of Egypt. Refreshments will be served.

Looking Back at May 2019

**First Sunday Lunch -
Presentation on Sustainable
Seafood by Annie Peterson &
Janet Peterson**



**Teacher Appreciation
Breakfast at Frances S. Tucker Elementary**



**Storytime with Pastor Missy in
the Prayer Garden**



**Mother's Day March - Homestead Detention
Center**

