



May 2019

# The Spark

Riviera Presbyterian Church embracing all God's children



**You are invited to celebrate Mother's Day with us on Sunday, May 12 with a special 11 am worship service celebrating parenthood. After service please stay for ice cream and mimosas.**

## **Mission Statement**

Riviera Presbyterian Church is a spiritual community that accepts and embraces all God's children.

# Missy's Message

Riviera Presbyterian Church  
5275 Sunset Drive  
Miami, FL 33143  
(305) 666-8586

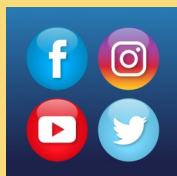
11:00am Sunday Worship Service

Office Hours M - F 9:00-5:00

[www.rivierachurch.org](http://www.rivierachurch.org)

Connect with us on social media

@RivieraChurch



Rev. Martha Shiverick  
Pastor  
[marthashiverick@gmail.com](mailto:marthashiverick@gmail.com)

Walter Busse  
Director of Music

Barbara Prieto  
Certified Church Administrator  
[rivierachurch@bellsouth.net](mailto:rivierachurch@bellsouth.net)

Kathy Stults  
Clerk of Session  
Session Members  
Kyle Dettloff  
Vivian German  
Christian Mazzola  
Barbara Overton  
Bryan Page  
Rey Prieto  
Kathy Stults  
Cris Sweeny

## Riviera's Mission Statement

Riviera Presbyterian Church is a spiritual community that accepts and embraces all God's children.

Therefore;

- We engage with each other in joyful worship and thoughtful education.
- We dedicate our resources and talents to God's work.
- And we open our hearts in active mission to others.

[Donate](http://WWW.RIVIERACHURCH.ORG)

[WWW.RIVIERACHURCH.ORG](http://WWW.RIVIERACHURCH.ORG)



May 2019

Dear Riviera Family,

The Easter Lilies and their powerful scent are now out of the church, but the Easter Message of hope still fills the air. The Sundays of May are the Sundays of Easter and the four Sundays before we start our 2019 Summer Series at Riviera which are always fun.

Each Sunday in May is a Celebration. Not just of Easter, but of other events in the life of our church and its members. The First Sunday we will Celebrate Earth Day and are so happy that Janet and Annie Peterson will give a presentation about sustainable eating and living. As an Earth Care Congregation, we care about God's good creation and realize our responsibility to care and be stewards of this lovely blue planet called earth. The other Sundays include a congregational meeting to vote in Elders for vacant unexpired terms, a Mother's/Parents Day Ice Cream Social with Mimosas, the Installation of New Officers, and a meditation given by Elder Michele Ready.

And because we are a church family, we will also keep our members who are on our prayer list close to our hearts. As we enter the month of May, we are aware the Chuck Hannemann will still be in radiation and chemo therapies throughout the month and that Vivian German will still be in Arizona healing from surgeries to her broken foot and leg. Both the Hannemann family and the German families need our prayers for total healing and recoveries.

In Christ and in Love,  
Missy

The Rev. Martha M. Shiverick

# Worship & Music

**Come worship every Sunday in May at 11:00 am:**

**May 5th - Earth Day Celebration at Riviera - Preparing for the Future**

Worship will celebrate the beauty of God's Creation and our relationship as caretakers of it. Earth Care Advocates Janet and Annie Peterson will discuss sustainable eating and living during the first Sunday potluck lunch.

**May 12th - Mothers' /Parents' Day - 'An Ode to Joseph - The Perfect Spouse and Parent!'**

Today's worship service will honor parenthood.

Short Congregational Meeting followed by Ice Cream Social and Mimosas!

**May 19th - Meditation by Elder Michele Ready**

Installation of Officers to unexpired terms

**May 26th - Memorial Day Sunday - Rev. Pat Ashley Preaching**

Remembering the sacrifices made by those who have fought our nation's wars.



Ukulele rehearsals are Sunday, May 12 and May 26 at 12:30pm in the sanctuary. If you are interested in joining please speak to our Director of Music, Walter Busse. We have ukuleles available for you.

**JOIN THE  
CHOIR**

If you're interested in getting involved please come on Thursdays at 7:30pm in the sanctuary and give it a try.

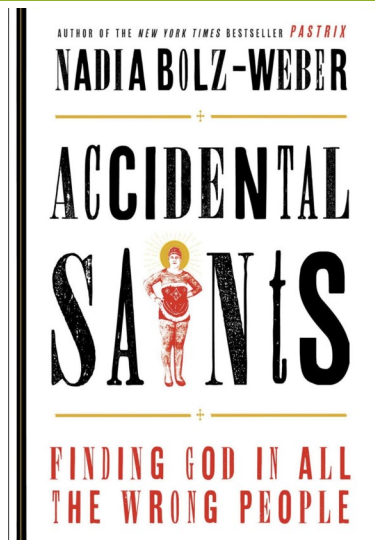
Make  
a *Joyful* noise unto the Lord  
Psalms 98:4



# Christian Education



You are invited to  
**Theology Over  
Morning Java**  
Sundays at 9:30  
am in the church  
library.  
Elder Chuck  
Hannemann leads  
this class for all  
adult ages and all



## **Women's Study Group**

**NEW MEETING SCHEDULE**

Please join us on the 3rd  
Wednesday of the month  
May 15th at 7:00pm



## **Christian Education for children**

### **The Deep Blue Mission:**

Reaching, empowering, and equipping children, and those who care for them, with grace-based resources that help them on the journey.

### **Deep Blue Kids will...**

Be with God

Love God and neighbor

Understand themselves as children of God

Explore faith and the Bible

Deep Blue offers meaningful and engaging curriculum, encouraging children to “dive deeper” into the Bible and explore their faith in fun and age-appropriate ways. Sunday school will be the 2<sup>nd</sup> and 4<sup>th</sup> Sunday of the month. The 1<sup>st</sup> and 3<sup>rd</sup> Sunday of the month children are invited to attend worship.



# Mission

## **RIVIERA'S FOOD PANTRY** **CURRENT NEEDS**

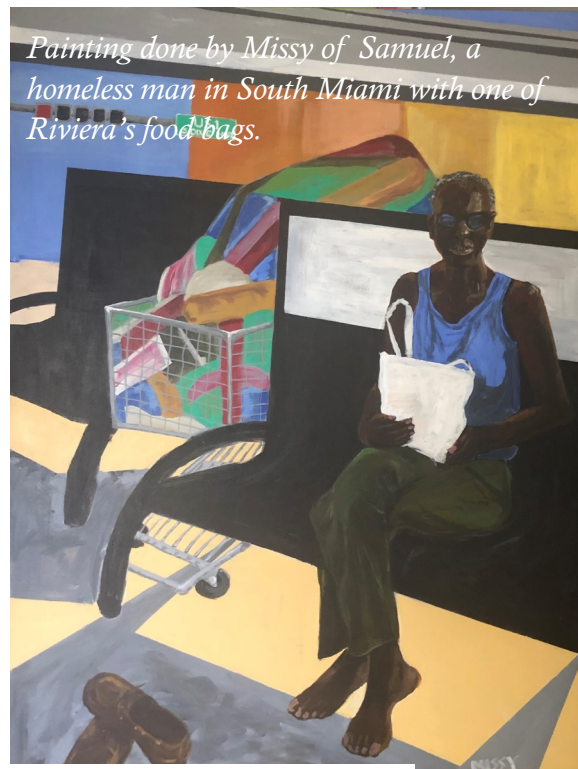
1 pound box crackers, peanut butter, canned soups, canned fruits, pasta sauce, dried beans (12 - 16 oz), granola or protein bars

**So far this year with your donations  
we have given out**

30 family size grocery bags  
30 individual bags

10 grocery store gift cards to families at  
Frances Tucker Elementary

If you would like to make a donation to the  
food pantry please go to  
[www.rivierachurch.org](http://www.rivierachurch.org) - memo Food Pantry



## **Child Care Center**

at Riviera Presbyterian Church



### **A Warm Welcome for Child Care Center Families**

Riviera extends a warm welcome to new families in our Child Care Center with the gift of home-baked bread lovingly made by Karen Picciano and Brian Picciano (a former CCC student himself). As one new family said:

*It was such a warm gesture made with love. We very much appreciated and enjoyed it! We are new to the CCC. This welcome was totally unexpected, but completely reiterates the feeling we got when we first toured. It can be hard to leave your little one. However, we feel very appreciative of the care she has already been shown.*

In addition to the Warm Welcome, we host Storytime with Pastor Missy each week. Missy or another Riviera volunteer reads a story for the 3 and 4 year olds. If you would like to be part of Storytime, please contact Missy.

The Child Care Center is a 39 year old mission of Riviera and providing, safe childcare for working families. Over 135 children attend the center each day with another 20 attending the new afterschool program. At Riviera, we know that if you educate a child, you can change the world.



# More Mission



## ONE GREAT HOUR OF SHARING SPECIAL OFFERINGS

HUNGER • DISASTER • DEVELOPMENT

Thank you Riviera Friends and Members! Your generous gifts of \$505 exceeded our original goal for 2019 of \$300. Your gifts will help to fight hunger, thirst, help in disaster recovery, refugee assistance, education and



### **Sustainable Seafood First Sunday Luncheon**

**Sunday, May 5th  
12:00noon**

Janet and Annie Peterson will be leading a conversation on sustainable seafood choices in celebration of Earth Day.

As an Earth Care Congregation and a Hunger Action Congregation, Riviera members are committed to living out our faith by being good stewards of the earth and its resources.

Please bring a dish to share.

**Riviera Presbyterian Church 5275 Sunset Drive**

## THEOLOGY **uncorked**

2nd Sunday of the Month  
5-7pm  
Titanic Restaurant & Brewery  
5813 Ponce De Leon Blvd,  
Coral Gables



### THEOLOGY UNCORKED

Theology Uncorked will meet on Sunday, May 12th at 5:00 pm at Titanic Restaurant and Brewery, where we wrestle with issues of social concern.

Titanic is located at 5813 Ponce de Leon Blvd, Coral Gables, FL 33146. All are invited!

Food and beverages for purchase.

# Holy Grounds



## Holy Grounds - in need of help in May and June

Holy Grounds is the time after worship where we gather for refreshments and fellowship time after worship. Currently there are several dates open. Please see the sign up sheet in the Welcome Area/Narthex or contact the church office. You can contribute \$25 and we will purchase the treats or you can bring them on your chosen date. Monetary contributions will be needed at least one week ahead of chosen

*Riviera Presbyterian Church is an Earth Care Congregation*

## Earth Care Tips: Making Sense of Sustainable Coffee Labels

They're those little rectangular icons lined up on your favorite gourmet coffee bags—a tree, a flower, a frog, a harvester, each trying to tell you something about how the coffee was grown. But what does each one mean, and how do they differ?



<https://www.rainforest-alliance.org/articles/rainforest-alliance-certified-coffee>



<https://nationalzoo.si.edu/migratory-birds>



<https://www.usda.gov/topics/organic>



<https://www.fairtrade-certified.org>



# Stewardship



We cannot do everything, and there is a sense of liberation in realizing that. This enables us to do something, and to do it very well. It may be incomplete, but it is a beginning, a step along the way, an opportunity for the Lord's grace to enter and do the rest.

— Oscar Romero —

AZ QUOTES

## What is Per Capita?



Per Capita is a fundamental way in which all of the nearly 10,000 congregations and mid councils of the Presbyterian Church (U.S.A.) connect, participate and share in the work of the wider church. Per capita is the primary source of funding for the Office of the General Assembly, and is how Presbyterians mutually and equitably share the costs of coming together to discern the Spirit's leading for the future. All Presbyterians are called to take part in the ecclesiastical and administrative work shared by the whole church through per capita giving. The annual rate is a per-member apportionment that is assessed biennially by the General Assembly. (Book of Order, G-3.0106) This year the per capita is

\$36 per active church member.

We want to thank all the members and friends of Riviera who have donated to the Per Capita apportionment for Riviera. Our bill is \$2880.00 so far to date we have received \$1102.00. If you are able to help pay your portion of the Per Capita you make pay online at [www.rivierachurch.org](http://www.rivierachurch.org), or sending a check to the church office.

*Thank you for providing the means to strengthen the connections of our work, and build lasting relationships to help all Presbyterians share God's love through mission and ministry.*



Most people think that churches are only used on Sunday mornings, well that is not the case at Riviera. We are a church that not only worships, provides Christian education and fellowship on Sundays but we also open our doors Monday - Saturday for families in the community via relationships with various nonprofit organizations in the community.

# Child Care Center

at Riviera Presbyterian Church




THE SOURCE FOR KNOWLEDGE ON GENDER & ORIENTATION®



A Total Community Project



STRONG MINDS - STRONG HEARTS



miami  
children's  
chorus

Hear the Future in Every Voice



GIRL SCOUTS



Embroiderers' Guild



ALL PRO DAD®



Young Patronesses of the Opera



We are writing to share the news of the death of Riviera's friend Anne Calhoun. Anne died on April 24th. There will be a memorial service at Riviera on Thursday, May 16 at 11:00am.

In lieu of flowers the family has asked that donations be made in her memory to Riviera Presbyterian Church - for organ restoration.



*Would you like to help? Let us know!*

## *Congregational* **Care Team**

**Congregational Care Team is the lay caregiving ministry of Riviera.**

We are looking for folks to help with meals in times of illnesses, new baby, death in the family, rides to doctor appointments. Folks that can offer support and encouragement to others, able to relate to people in diverse circumstances in their lives and are compassionate and good listeners.

If you are interested in finding out more please contact Missy or Karen Collier.

# Session News...

## Church Membership Anniversaries

Membership in the church is a joy and privilege. It is also a commitment to participate in Christ's mission. These faithful members bear witness to God's love and grace and they have been involved in the ministry of Christ's Church here at Riviera

### **Omitted in February's List**

Avon Kunce - 17 Years

### **May**

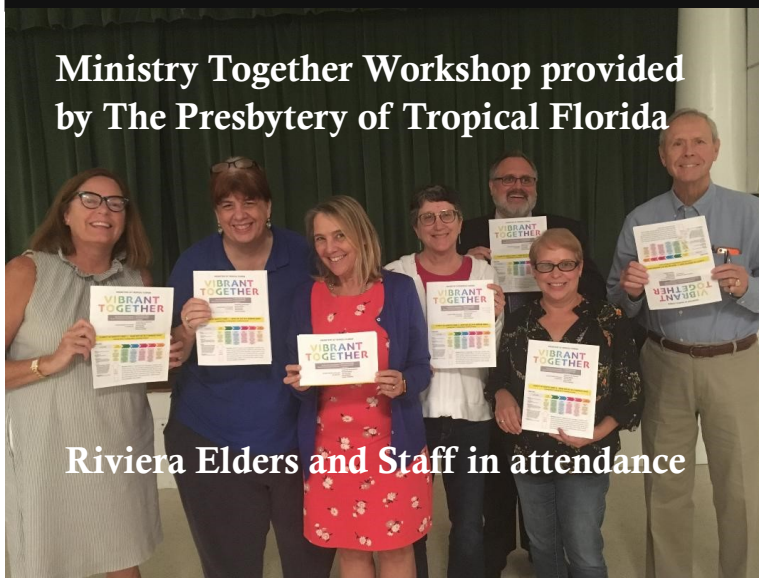
James Carpenter - 44 Years  
Karen Collier - 9 Years  
Valerie Deville - 15 Years  
John Friedhoff - 8 Years  
Robert Friedhoff - 8 Years  
John German - 58 Years  
Annie Peterson - 14 Years  
Leah Picciano - 10 Years  
Nicole Prieto - 10 Years  
Sage Sweeny - 4 Years  
Alex Valdivia - 10 Years  
Belinda Vidal - 15 Years

- Date for next **Congregational meeting**: May 12, for the purpose of electing 2 new elders (This will be to fill the 2 unfulfilled terms of the 2020 class) and the election of the Nominating Committee whose task will be to nominate elders for the Session Class of 2022 .
- Thanks to Cris Sweeny for the Lenten Season yard signs.
- Discussed the organ repairs. The main reservoir controlling the wind pressure has failed. The rebuild will cost \$5500.
- Motion to accept the Pentecost Offering in June **MSP**.
- Presbytery Vibrant Congregations Workshop- Christian and Kathy reported on the energy at the meeting.



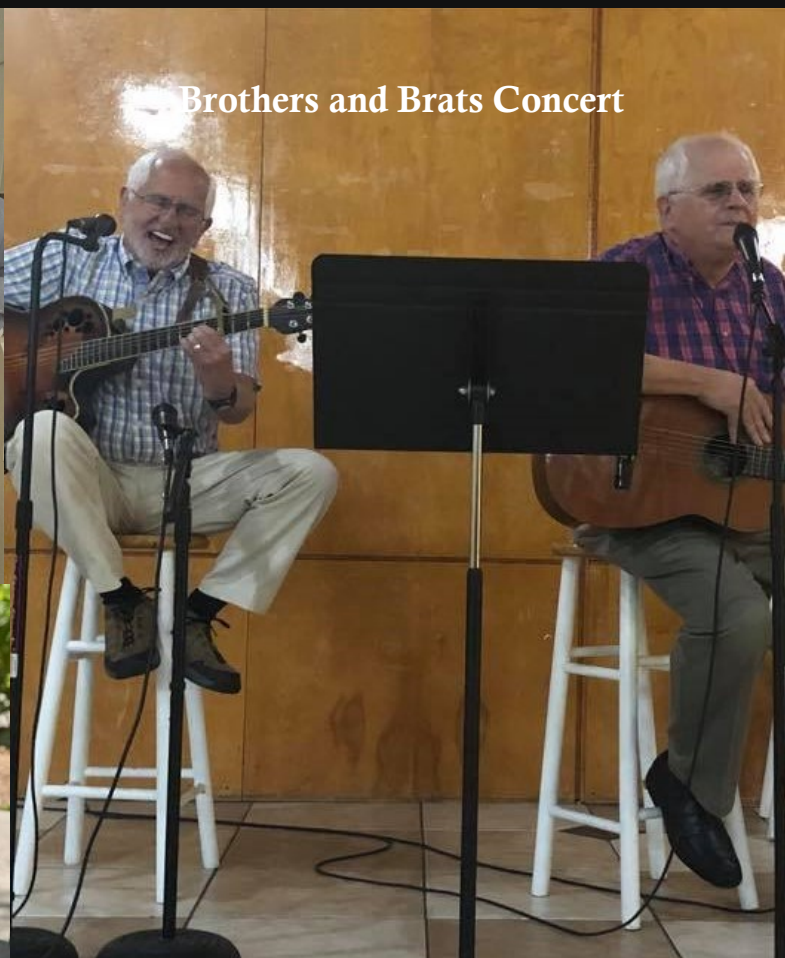
# Looking Back at April 2019

Ministry Together Workshop provided  
by The Presbytery of Tropical Florida



Riviera Elders and Staff in attendance

Brothers and Brats Concert



Palm Sunday



Godspeed Allison!



Thursday, April 18 at 7 pm

**MAUNDY  
THURSDAY**

Worship Service



Easter

